

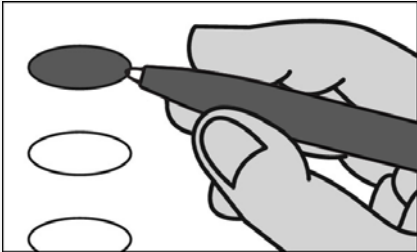


Review

SAMPLE

Instructions to Voter

Making Selections

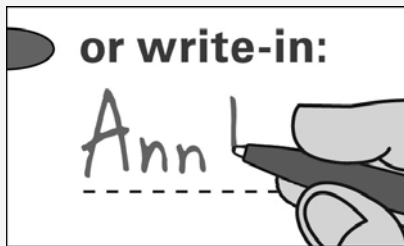


Use blue or black ink only.

To vote you must darken the oval of your choice completely and do not make any marks outside of the oval. You do not have to vote for every contest.

If you make a mistake or a stray mark, do not erase or cross out. Ask for a new ballot from the poll workers.

Optional write-in



To cast a Write-In vote for a candidate whose name is not on the ballot, darken the oval to the left of the line provided and print the name on the line.

President of the United States
Four Year Term
Vote for One

- Donald J. Trump
- Roque Rocky De La Fuente
- Bill Weld
-

Write-in

Attorney General
Four Year Term
Vote for One

- Heather Heidelbaugh
Allegheny County
-

Write-in

Auditor General
Four Year Term
Vote for One

- Timothy DeFoor
Dauphin County
-

Write-in

State Treasurer
Four Year Term
Vote for One

- Stacy L. Garrity
Bradford County
-

Write-in

Representative in Congress
17th District
Two Year Term
Vote for One

- Sean Parnell
Allegheny County
-

Write-in

Representative in the General Assembly
28th District
Two Year Term
Vote for One

- Mike Heckmann
McCandless
- Rob Mercuri
Pine
- Libby Blackburn
McCandless
-

Write-in

Please Vote Both Sides

MARSHALL DIST 6

Delegates to the National Convention
17th District
Vote For Not More Than Three

- Keith Rothfus**
Uncommitted
- Jeff Steigerwalt**
Uncommitted
- Gabriel C. Keller**
Uncommitted
- Lidia C. Turzai**
Uncommitted
- Mike McMullen**
Uncommitted
-

Write-in

Write-in

Write-in

Alternate Delegates to the National Convention
17th District
Vote For Not More Than Three

- Jeff Steigerwalt**
Uncommitted
- Nicole M. Keller**
Uncommitted
- Mike McMullen**
Uncommitted
- Jeremy Shaffer**
Uncommitted
- Cindy Kirk**
Uncommitted
-

Write-in

Write-in

Write-in

County Committeeman
MARSHALL DIST 6
Vote for One

- Seth Springer**
-

Write-in

County Committeewoman
MARSHALL DIST 6
Vote for One

- Lori P. Springer**
-

Write-in

Thank you for voting!
Please remember to scan your ballot.

Allegheny County
Board of Elections

Auffelt
Bethy Hallen
Sam

MARSHALL DIST 6

Typ:02 Seq:0316 Spl:01

Precinct Number 315